

Dust collector for laser marking equipment with relatively short operating time.
Suitable for dust collection with low viscosity fumes, such as metal and glass.

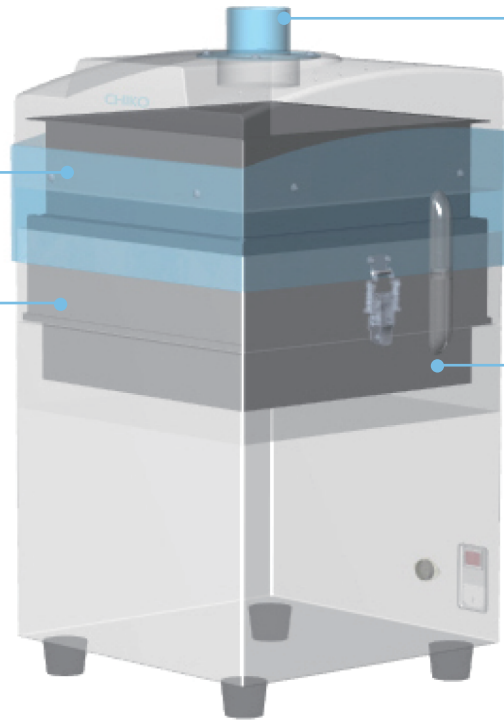
Product structure and features

Pre-filter (Primary filter)

The specially designed structure causes dust collision and buffering. The particles become larger and are caught by the primary filter.
The primary filter component is cassette type with a polypropylene pleat configuration.
The disposable filter can be easily replaced.

Activated carbon cassette (Secondary filter)

Any fine particles not trapped by the primary filter collide with the granular activated carbon and are trapped as they pass through. Smells are removed at the same time.



Detachable flange

The size of the flange at the suction port can be changed with a single touch.

High performance filter (Tertiary filter)

As dust is adsorbed from the activated carbon filter, the air is cleaned and expelled as exhaust. Any dust particles not trapped by the secondary filter are caught by the high-performance filter. Prevents activated carbon particles from coming in on the blower side.

Easily detachable flange type (sold separately)

Size	Type
φ38	FRJ-D-38-35-92
φ50	FRJ-D-50-35-92

Remote cable (sold separately)

Model	Type
CKU-060AT3-ACC	MT-173-8(3m)
CKU-050-ACC●	MT-173-3(3m)

Filter type

Model	Pre-filter(Primary filter)	Activated carbon cassette(Secondary filter) (Activated carbon amount approx. 1.6kg)	High performance filter (Tertiary filter)
CKU-060AT3-ACC	CHF-2222-40	ACC-2525-75ST	CHF-2525-50
CKU-050-ACC●	CHF-2222-40	ACC-2525-75ST	CHF-2525-50

Note: Contents may change without notice.

List of specifications

Model	Output	Voltage	Frequency	Rated current	Maximum air flow	Maximum static pressure	Noise level ^{*1}	Suction port (hose) size	Suction port sold separately (size can be changed)
CKU-060AT3-ACC	50W	100V single phase	50/60	2.3A	2.8 m³/min	2.5kPa	53-61dB	φ65	φ50・φ38
CKU-050-ACC●	30W	100V single phase	50/60	2.1A	2.2 m³/min	1.8kPa	56dB	φ65	φ50・φ38
Model	To be used with 200-240V	CE compliant	Panel	Power cable	Remote control feature	Suitable for use in clean rooms		Mass	Main body dimensions (D×W×H)
CKU-060AT3-ACC	○	○	AT3	3m	○	—		15.8kg	271×288×517mm
CKU-050-ACC●	—	—	—	3m	○ ^{*2}	—		17.5kg	274×292×517mm

^{*1} Measurements obtained in Scale A (dBA) from a randomly selected position at a distance of 1m using a unit with a hose connected to its suction port.
^{*2} Can be switched between ON/OFF only.

Note: Contents may change without notice.
● Production of CKU-050-ACC is discontinued.

Features and comparisons

CKU-060AT3-ACC	Model	CKU-050-ACC●
Standard remote operation is possible	Remote operation	Can be switched between ON/OFF only
Operating capability can be adjusted according to 7 levels	Operation	Capability cannot be adjusted
Suction pressure, pressure differential, exhaust pressure and external pressure can be checked numerically.	Pressure display sensing capability	None
53dB-61dB	Operating noise	56dB

● Production of CKU-050-ACC is discontinued.



CKU-060AT3-ACC

CKU-050-ACC

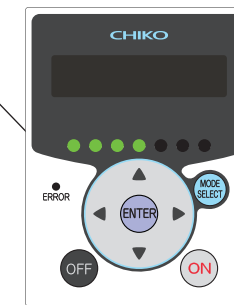
Discontinued Model

Control panel

AT3 Panel

See pages 8-9 for more details.

CKU-060AT3-ACC only



Remote control feature included (for remote operation)

■ Remote cable (sold separately/model: Using MT-173-8 (3 m)) enables remote operation of peripheral equipment.



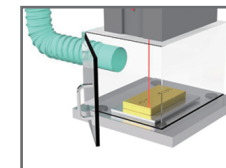
Motor cable receiving port on main body

1. Operation input signal
2. Operation pressure signal (DC1-5V)
3. Filter clogging signal
4. Remote-control operation switching input signal
5. Operating signal
6. Abnormality signal
7. Change of operating level input signal (DC0-5V)
8. Gnd

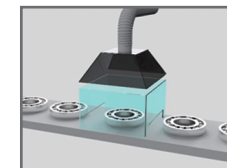
- Operation ON/OFF
- Change capacity level (air volume)

Note: CKU-050-ACC is ON/OFF operation only.

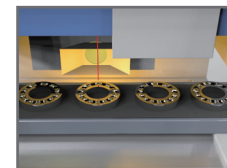
List of applications



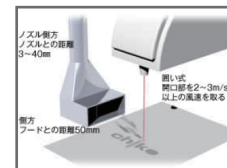
Removal of dust when marking SS



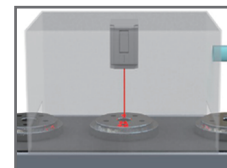
Removal of dust when marking bearings



Removal of dust when marking bearings

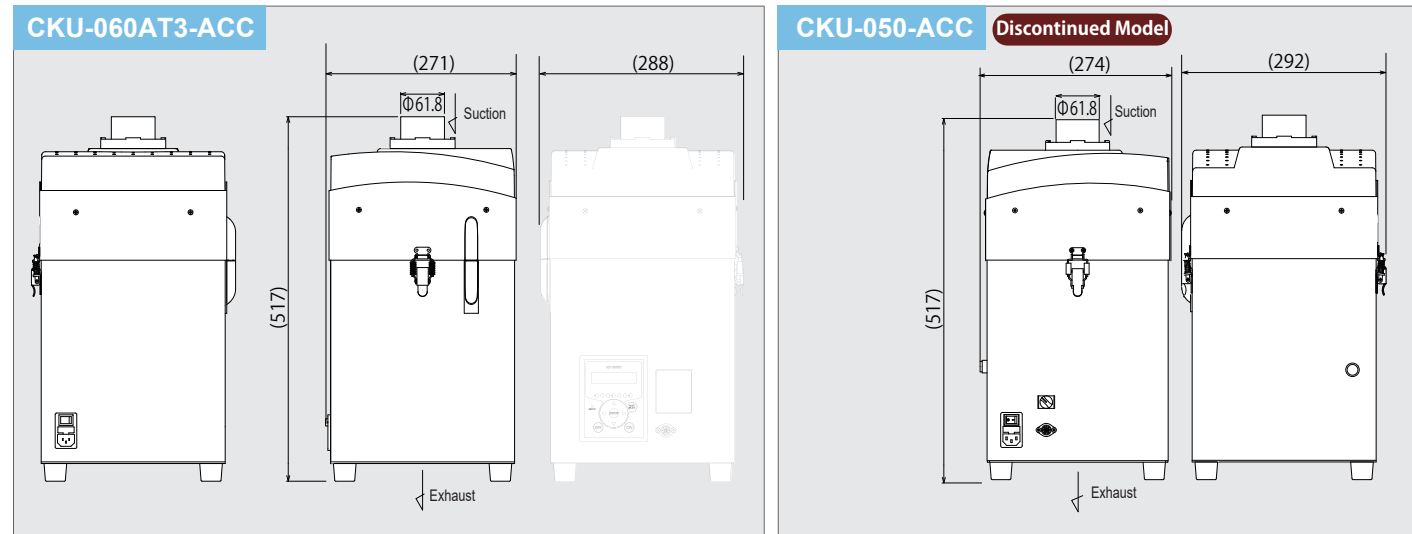


Removal of dust fumes from laser marker



Removal of dust when marking brake drum

Dimensions



Note: Contents may change without notice.